



Artist's impression only

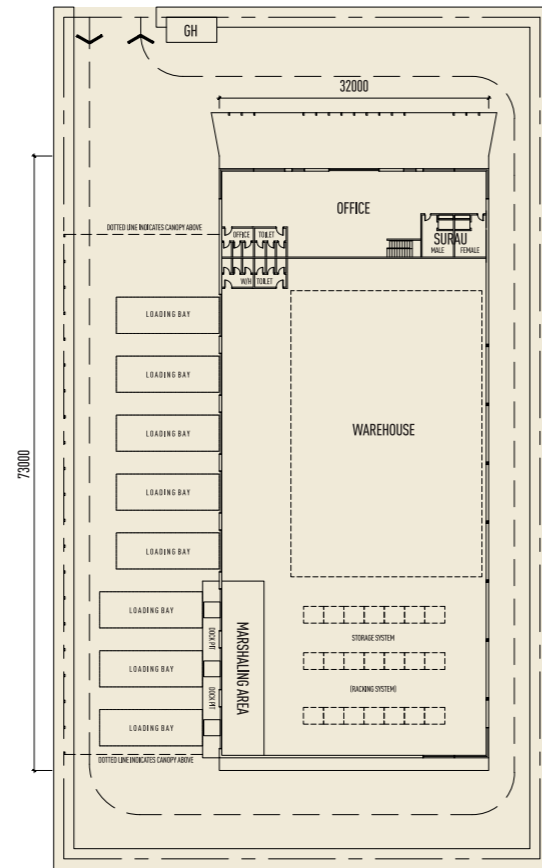
## LOGISTICS HUB

### BUILDING GENERAL DIMENSIONS

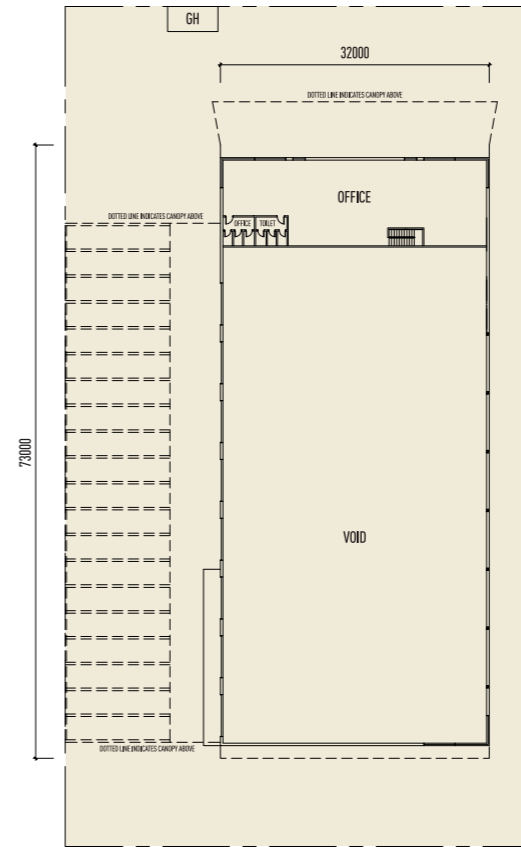
LOGISTICS HUB						
	Area (sm)	General Length (mm)	General Width (mm)	Floor to Floor Height (m)	*Clear Height (m)	Floor Load Bearing (kN/sm)
Ground Floor	2,240	70,000	32,000		24	50
Double Storey Office, etc.	780	12,000	32,000	3.30	2.70	5
<b>Total</b>	<b>3,020</b>					

\*To the bottom of the reinforced concrete beam

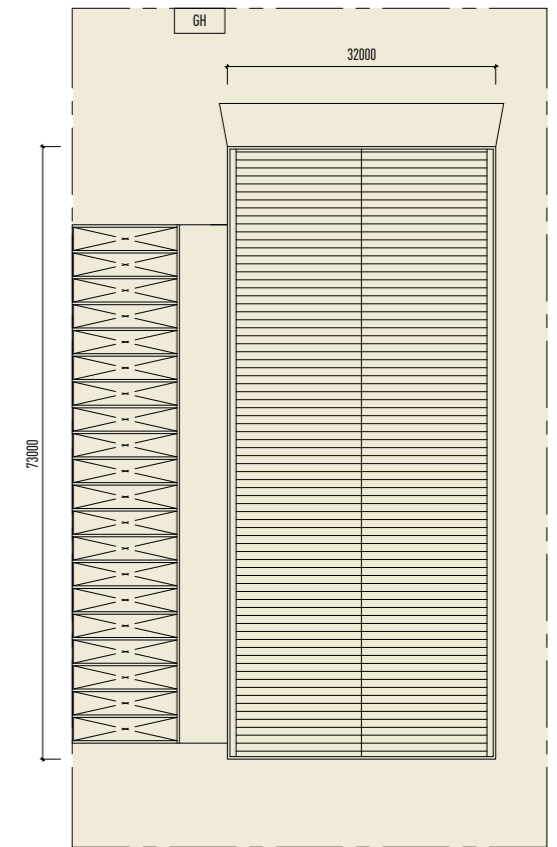




**GROUND FLOOR**



**FIRST FLOOR**



**ROOF**

**TOTAL FACTORY BUILDING  
BUILT-UP AREA** 3,020 SM

Ground Floor 2,240 sm

Double Storey Office, etc. 780 sm

BUILDING FEATURES	
Structure	Reinforced concrete
Walls	Brick wall
Roof	Metal deck roof on metal roof truss system
Ceiling	Skim coat / plaster ceiling for office areas
Windows	Aluminium framed glass windows
Warehouse Doors	Metal roller shutters
Office Doors	Plywood flush doors
Wall Finishes	<b>A</b> <b>Paint finishes (Internal)</b> Low Volatile Organic Compound (VOC) acrylic paint
	<b>B</b> <b>Tiled finishes (Toilets)</b> Porcelain tiles to ceiling height
	<b>C</b> <b>General exterior</b> Metal cladding
Floor Finishes	<b>A</b> <b>Warehouse</b> Floor hardener in clear epoxy finish
	<b>B</b> <b>Toilets</b> Homogenous tiles
	<b>C</b> <b>Office</b> Cement rendered



**MECHANICAL AND ELECTRICAL FEATURES**

- Main power incoming supply of 400 Amperes 3-phase will be provided.
- Exhaust system provided to warehouse and storage area.
- Back-up power supply from centralised standby generator set provided by the centralised Independent Utility Facility (IUF). Backup power will automatically be switched on in the event of an interruption in power supply from the main power grid.
- Emergency and exit lightings according to Fire and Rescue Department requirements
- In-building fibre optic local area network cabling
- Fire hose reel system according to Fire and Rescue Department requirements
- Automatic sprinkler system according to Fire and Rescue Department requirements
- Fire alarm system according to Fire and Rescue Department requirements
- 10 numbers of air-conditioning power point and piping provided to office areas